

Flora the Fortune Teller

Energy Quest, 4th Floor

Have you ever wondered what your fortune will be? Want to know how much candy you'll get this Halloween? Well, Flora— LSC's resident fortune teller—returns to help answer these and many other questions about your future. Come visit Flora to have your fortune told, if you dare!

Member News and Notes

- Café Skylines is open tonight from 5:30 – 7:30 pm
- Connections: the Store is open until 9:00 pm tonight

NEW! Science Camp at LSC: Fall Session, Nov. 8 - 9 PSE&G Court, 1st Floor

Registration now open! Does your family have a break from school during the NJEA conference, Nov. 8 - 9? Science Camp at LSC is offering a NEW two-day camp full of fun, hands-on, inquiry-based STEM courses for children in grades one through five. Members always receive the best rate. For more information stop by our table in PSE&G Court before leaving or visit lsc.org/fallcamp or call [201.253.1380](tel:201.253.1380).

Member-Only Raffle You are automatically entered upon check-in tonight. One entry per membership and winners posted in PSE&G Court at 7:35 pm.

Our next **Member Morning** is in *Explore* on Nov. 10 & 11, 9:00 – 10:00 am.

Double Discount Days at Connections: the Store Holiday shopping season is almost here! Members enjoy a 20% discount on Nov. 17 - 18 and Dec. 1 - 2.



The International Exhibition of Sherlock Holmes, opens on November 3! Step into Sir Arthur Conan Doyle's Victorian London and become Sherlock Holmes' eyes and ears as he tackles a baffling new case in a world steeped in innovation and experimentation. *Please note this*

is a premium exhibition for which there is an additional fee.

We can't wait to show you this cool new exhibition! From 3:00 – 5:00 pm on Friday, Nov. 2, you are invited to watch as we shoot a TV ad in the Sherlock Holmes gallery. The event is free for members but please RSVP to eromanaux@lsc.org with the number of participants and their ages.

Special Thanks

In kind donations supplied by **Inserra Supermarkets***

*while supplies last



Trick or Treat Stations open at 6:00 pm

- ❖ 🍬 Visit to Skyscraper! (1st Floor).
- ❖ Find the Group Dining window and be rewarded (2nd Floor).
- ❖ Get something sweet in *Eat and Be Eaten* (3rd Floor).
- ❖ Drop in to *Infection Connection* (3rd Floor)
- ❖ 🍬 Dip into *Our Hudson Home* to find the goodies (4th Floor).
- ❖ Pop into *Energy Quest* for a treat on the 4th Floor.
- ❖ Find the *Nano Mini Exhibition* on the 4th Floor for fun and treats.

🍬 Non-food treats available

All candy is individually wrapped. Please note: Some candy may contain nuts.

Treats and bags available while supplies last.

All activities and locations are subject to change.

Thank you for your Membership!

Jennifer Chalsty Planetarium and LSC Giant Dome Theater 2nd Floor

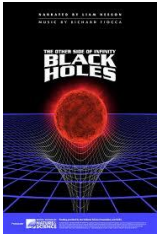
Purchase tickets at Box Office - \$2.50 each



SpooktacuLaser Show (30 minutes)

Show Times: 7:15 and 8:15 pm

Celebrate the spooky season at our *SpooktacuLaser Show*! At this family-friendly show, you'll rock out to classic Halloween songs set against high-tech lasers in the LSC Giant Dome Theater. Don't miss it!



Black Holes: The Other Side of Infinity (35 minutes)

Show Time: 6:15 pm

Black holes are one of the most intriguing and mysterious phenomena in the universe, a place where humans could never venture—until now! Narrated by Liam Neeson, travel inside the black hole at the center of the Milky Way, a bizarre and dangerous trip that you can safely experience from the comfort of your seat.

Along the way, learn more about scientists' search for black holes, the formation of stellar mass black holes, and the mind-boggling supermassive black holes.

Live Show JDW Digital 3D Theater, 2nd Floor

Ice Cream LSC style

Show Times: 6:30 and 7:30 pm

Will it be pickled mango, broccoli cheese or ghost pepper? You never know what flavor Liquid Nitrogen ice cream our STEM Educators will concoct. Join us for this 20-minute entertaining presentation. Trick or treat! **Seating is limited. Free Tickets are available at the Membership Table in PSE&G Court.**

Activities: 6:00 – 8:30 pm, unless otherwise noted

Zombie Foodie – 6:30, 7:15, 8:00 pm 1st Floor, Interactive Theater

Braaiinnss! Well, actually, zombies can be quite the food connoisseurs, enjoying far more than just human brains. Join our gruesome gourmet as she reviews her next meal! We need some ~~victims~~ volunteers with healthy, fresh organs to help us learn about anatomy, and hear easy tips for enjoying human flesh if you ever become a zombie, too. **Suitable for ages 6+.** **Seats are limited. Free tickets available at the entrance to the Center for Learning and Teaching.**

Spooky We Explore 2nd Floor, I Explore

The Halloween spirit has invaded the Science Center, including Liberty Workshop! We need everyone's help to get ready for the holiday. Guests can use Halloween decorations and their creativity to make the Liberty Workshop house extra spook-tacular. Besides our usual house and block construction, we are also building skeletons! Piece together anatomical felt bones and learn where different bones can be found in your body.

Activities: 6:00 – 8:30 pm, unless otherwise noted

The Spider Maze 2nd Floor, outdoors at top of staircase

Join us and some of our spider friends for a maze of epic proportions. Make your way through this maze to learn more about eight individual spiders and their unique traits all while solving a puzzle. Don't worry, our spiders won't jump or frighten you, but help you learn about these eight-legged critters. (Weather permitting)

Break a Move with Dinosaur 2nd Floor, Governors Hall

Show off your Halloween dance moves – you might be joined by a T-Rex.

Pepper's Ghost Illusion Chamber 3rd Floor, Eat and Be Eaten

Step into the Pepper's Ghost Illusion Chamber and turn yourself into a ghost! Using some simple principles of physics, you will amaze your family and friends by appearing transparent. Can they figure out the illusion – or will they think you are truly a ghost?

Fang-tastic - 7:00 pm 3rd Floor, Eat and Be Eaten

Vampires may take the spotlight on Halloween, but you don't have to visit Dracula's domain to see fangs. Guests of all ages are invited to learn about what makes spiders and snakes such powerful predators. Meet these live animals fang-to-face in this seasonal animal encounter and you'll see that fangs don't always bite!

Bat Lab 3rd Floor, Infection Connection Lab

Fly around our bat stations and learn about the adaptations that bats use to survive. What is echolocation? How do bats communicate? What do they eat? With up to 1,200 unique species of bats, you'll go batty answering all these questions and learning how important bats are to our ecosystem.

Doom Zoo 3rd Floor, Communication

Are you ready to face your fears? Enter the horrific workshop of Doctor Krieger von Crimson, a surgeon obsessed with blurring the line between man and animal. His domain imprisons his tormented experiments, nauseating mutants you have to see to believe. But beware, he is always on the lookout for his next "project." Prepare for petrifying scares and blood-curdling screams should you dare to step inside.....THE DOOM ZOO! **Recommended for ages 13+.** **Due to the intensity of this attraction, it is NOT recommended for guests under the age of 13. We are not kidding!**

Pumpkin Bingo 4th Floor, Our Hudson Home

It's pumpkin season! Play Bingo while brushing up on your pumpkin anatomy. Observe and identify the outside parts, then use a real endoscope—a tool that doctors use to see inside of humans—to see what a pumpkin looks like inside.